



Printing Intelligence Report

Newcastle under Lyme Borough Council

01 August 2013 to 31 August 2013



Environmental Analysis



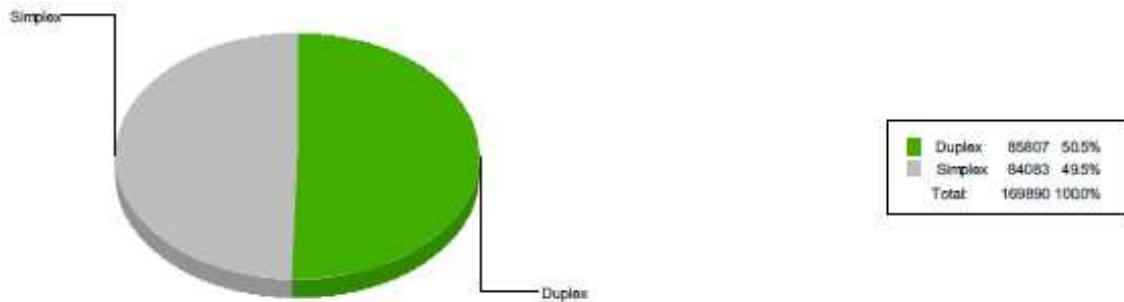
Printing in double sided mode not only saves paper (and therefore money) but also shows that users do more than just push the 'print' icon to produce their jobs. Most users will print emails without thinking about making them double sided, but what about larger jobs? Many large documents are too heavy to be picked up when only printed single sided. Also, the paper trays need to be refilled more often, increasing user dissatisfaction with the printing infrastructure as well as costs.

An environmental printing strategy can be promoted in the following ways:

1. Ensure all output devices support double sided printing. Most multifunctional devices support double sided printing as standard. For printers, it is an additional extra if it is available at all.
2. Promote the environmental savings to the users. Most people like to do something for the environment. Double sided printing can have a very visible impact by relating the paper saved to the number of trees.
3. Introduce paper recycling points to the office if they do not already exist. If users see the result of saving paper, that too links to double sided printing.
4. Make the devices print double sided by default. This is often just a simple setting on the print server by the IT department but makes a massive difference. Users can still choose to print a job single sided if there is the need to, but when they just click 'print' they can be printing double sided and therefore saving paper.

Environmental Analysis - Duplex

During the audit period, users have selected to print their jobs double sided 50.51% of the time. A total of 29,248 jobs were printed double sided saving 40,630 (23.92%) sheets of paper or the equivalent of 81.26 reams of paper or 57.41 trees annually.

Number of pages


However, during the audit period, a further 31,659 sheets of paper or the equivalent of 63.32 reams of paper or 44.73 trees annually could have been saved if all jobs had been printed double sided.

The chart below shows the environmental impact of printing in Newcastle under Lyme Borough Council. The first column (0%) shows what the environmental impact would have been if all documents were printed single sided. The second column (50.51%) shows the environmental impact at the current level of double sided printing. The third column (Saving) shows the environmental savings made due to the current level of double sided printing. The fourth column (100%) shows what the environmental impact would have been if everything had been printed double sided, and the final column (Waste) shows the potential environmental savings from the current situation if all jobs were printed double sided.

Environmental impact	0%	50.51%	Saving	100%	Waste
Total Sheets Used	169,890	129,260	40,630	97,601	31,659
Total reams of paper used	339.780	258.520	81.260	195.202	63.318
Total reams of paper used / year	4,000.636	3,043.865	956.771	2,298.346	745.518
Total weight of paper / year (kg)	10,001.590	7,609.661	2,391.927	5,745.865	1,863.796
* Equivalent number of trees / year	240.048	182.639	57.409	137.906	44.733
* Greenhouse gases / year (kg)	17,112.720	13,020.130	4,092.588	9,831.176	3,188.955
* Waste water / year (liters)	30,147.793	22,937.802	7,209.987	17,319.762	5,618.040
* Solid wastes / year (kg)	5,945.945	4,523.944	1,422.001	3,415.917	1,108.027

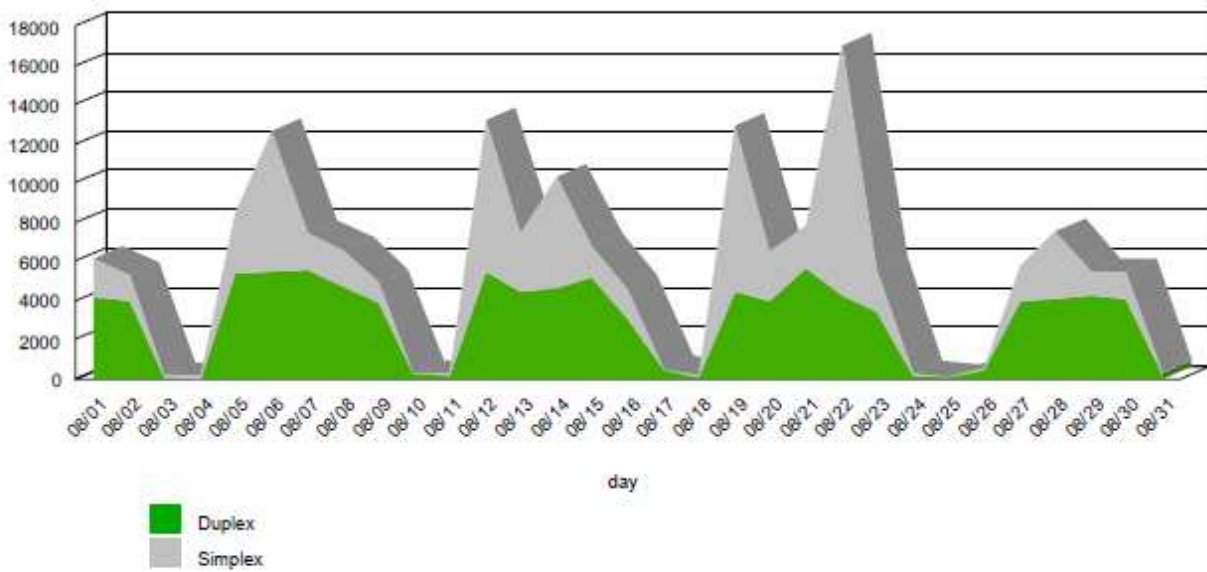
* Source: Conservatree.org

* Source: Environmental Defense Fund Paper Calculator - 100% post consumer recycled Uncoated freesheet

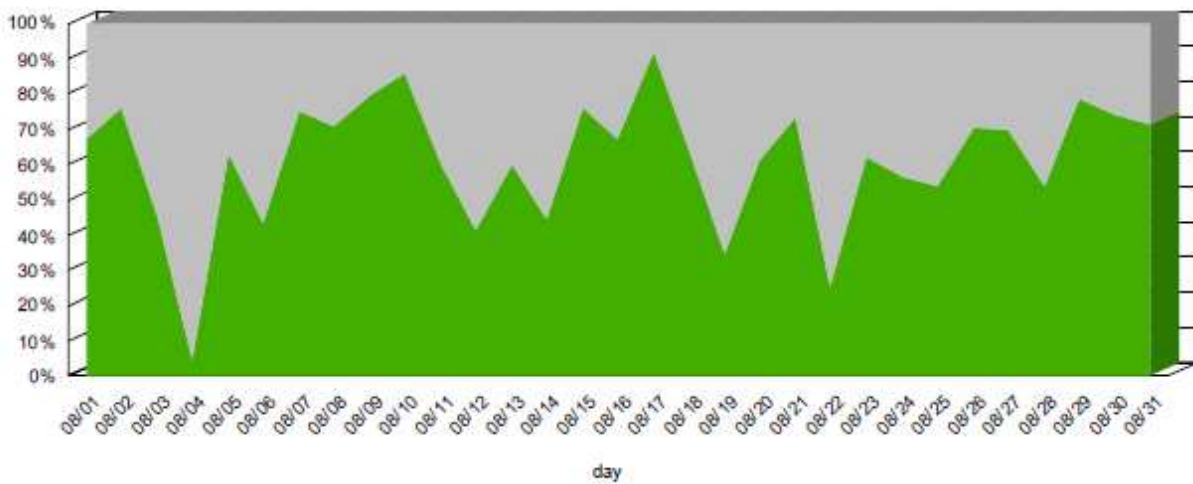
Environmental Analysis - Duplex

The following charts show how the ratio of double-sided to single-sided printing has changed over time. This is shown both as a proportion of the total printed pages and a ratio.

Total pages per day

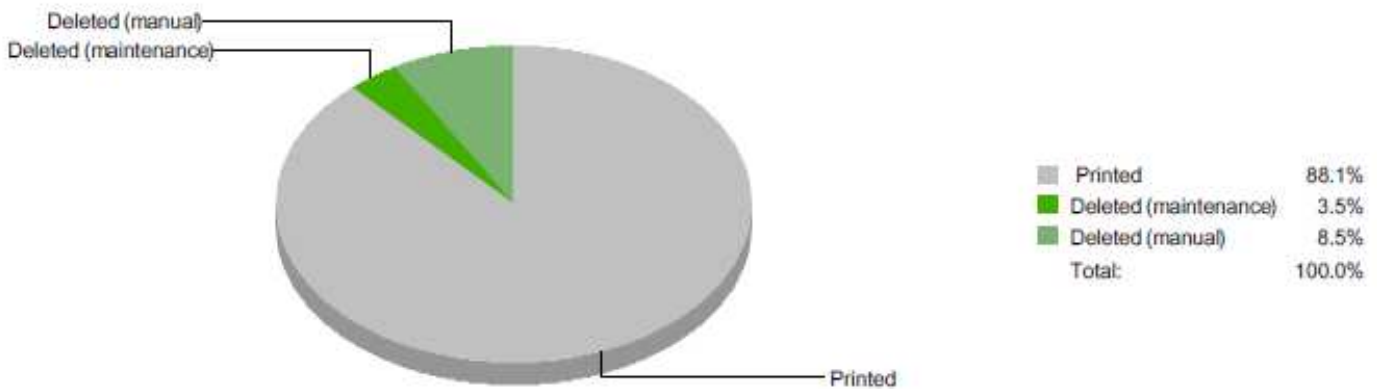


Percentage



Environmental Analysis - Deleted Pages Analysis

Deleted Pages Analysis



As well as the 169,890 pages printed by Newcastle under Lyme Borough Council, a further 23,110 pages were deleted either automatically by uniFLOW or by the users themselves. This shows that 11.97% of the total number of pages were deleted rather than printed.

Deleted Pages Analysis	
Total pages	169,890 (88.03%)
Deleted (manual)	16,402
Deleted (maintenance)	6,708
Deleted (license exceeded)	0
Deleted (unknown user)	0
Deleted (ACL restriction)	0
Deleted (budget exceeded)	0
Deleted (product avail. restriction)	0
Deleted (unknown reason)	0
Total Deleted pages	23,110 (11.97%)

Environmental Analysis - Deleted Pages Analysis

The environmental savings through job deletion (either automatically by uniFLOW or by the users themselves) can also be calculated and is shown in the table below. As we already know the amount of double sided printing taking place in Newcastle under Lyme Borough Council it is possible to estimate the amount of physical sheets of paper that have been saved and therefore a more accurate figure of the environmental savings.

Deleted Pages Analysis	
Total pages	169,890
Total sheets saved from duplex printing	40,630
Reduction in paper usage through duplex printing	23.92%
Total Deleted pages	23,110
Estimated sheets saved from deleted jobs	17,583
^ Equivalent number of trees / year	25
* Greenhouse gases / year (kg)	1,771
* Waste water / year (liters)	3,120
* Solid wastes / year (kg)	615

Combining the environmental savings of duplex printing together with those from deleted pages gives us the following total environmental savings figures for Newcastle under Lyme Borough Council

Environmental Analysis	
Total pages saved from duplex and deleted jobs	58,213
^ Equivalent number of trees / year	82
* Greenhouse gases / year (kg)	5,864
* Waste water / year (liters)	10,330
* Solid wastes / year (kg)	2,037